



# ProCal V4.6x

New Edition Features

## USB Auto Connect



# USB AUTO-CONNECT



ALSO SUPPORTS  
LEGACY TRANSMILLE  
INSTRUMENTS VIA  
USB TO RS232  
ADAPTER

PROCAL  
AUTOMATICALLY  
SCANS THE USB BUS  
FOR INSTRUMENTS  
TO DETERMINES  
EACH UNIQUE  
'ADDRESS'.

NO USER INPUT IS  
REQUIRED AND  
PROCAL ADVISES IF  
ANY INSTRUMENT IT  
EXPECTS TO FIND IS  
NOT LOCATED.

**NO VIRTUAL COM  
PORT SETUP  
REQUIRED!**

# USB AUTO-CONNECT

- **ADVANCED 'AUTO-DETECT' MODE TO 'TALK' DIRECTLY TO EACH USB INSTRUMENT**
- **SUPPORTS RS232 INSTRUMENTS USING A USB TO RS232 CONVERTER LEAD**
- **NO MORE 'VIRTUAL COM PORTS' TO CONFIGURE – PROCAL TALKS DIRECTLY TO THE USB INTERFACE CHIPSET**
- **PROCAL REPORTS ALL USB INSTRUMENTS DISCOVERED ON THE USB BUS AND ADVISES USER IF AN INSTRUMENT IS NOT FOUND AS LISTED IN PROSET**
- **COMPATIBLE WITH *FTDI* CHIPSET AS USED IN ALL TRANSMILLE PRODUCTS / CONVERTER LEADS**

# DETECTING USB DEVICES

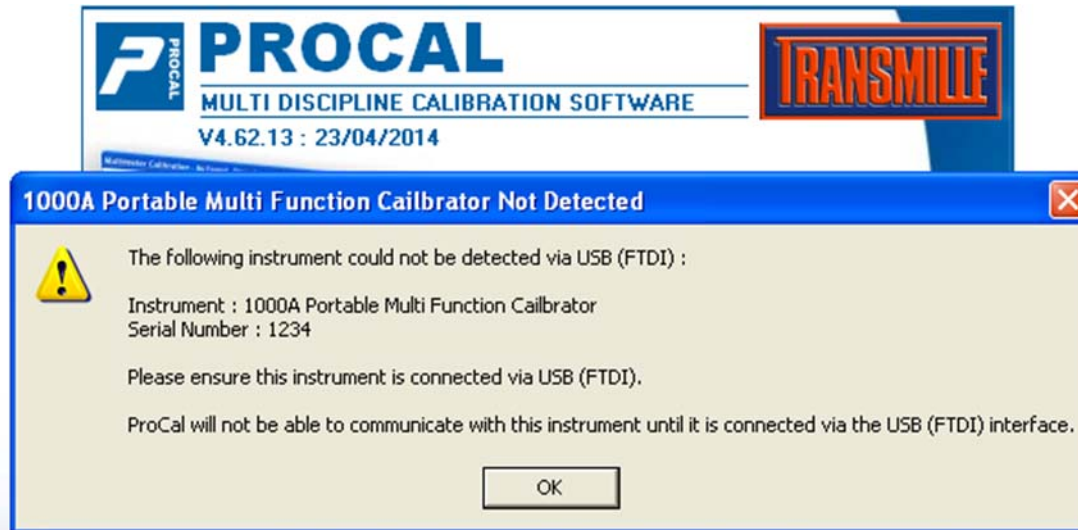
Detecting USB Devices...	
> USB Device [FTFWRWQ8] found... Transmille Model 8081 Version 3.05 Serial J1140J12	 8000 SERIES
> USB Device [FTFPFLAB] found... Transmille Model 3200A Version 10.1.14 Serial K1257I11	 3200A SERIES
> USB Device [FTFPFHCF] found... 3-3050 10011011111001	 3000A SERIES
> USB Device [FTGS7UFL] found... No Product Identification Received	NO DEVICE ID
> USB Device [AH01LMPE] found... Transmille Model 1000a Version 12.0.21 Serial 1001 Transmille Model 1000a Version 12.0.21 Serial 1001	 1000 SERIES
> USB Device [AM01YKWN] found... Transmille Model 3041a Version 12.2.12 Serial L1305D14	 3000A SERIES

AS PROCAL SCANS THE USB BUS EACH INSTRUMENT IS IDENTIFIED.

IF THE DEVICE DOES NOT TRANSMIT A RESPONSE, PROCAL DISPLAYS 'NO DEVICE ID' BUT WILL STILL BE ABLE TO SEND COMMANDS TO THIS 'UNKNOWN' DEVICE.



# DETECTING USB DEVICES



**IF PROCAL CANNOT LOCATE AN INSTRUMENT WHICH IS SET UP IN THE PROSET TRACEABILITY LIST IT WILL WARN THE USER. THIS MEANS ONE OF THE FOLLOWING ACTIONS IS REQUIRED :**

- **CONNECT CORRECT INSTRUMENT TO THE PC**
- **SWITCH INSTRUMENT ON**
- **CHANGE PROSET SETTINGS TO CORRECT INSTRUMENT TYPE AND SERIAL NUMBER**

**THIS DEMONSTRATES HOW PROCAL IS DESIGNED TO BE INTUITIVE TO USE AND ASSISTS THE USER WITH MEANINGFUL HELP MESSAGES**





[www.youtube.com/Transmille](http://www.youtube.com/Transmille)



@Transmille

**Transmille : Solutions In Calibration**

**Providing Innovative  
Solutions For The  
Metrology Industry**

