



ProCal V4.6x

New Edition Features

Direct Adapter Control



ProEdit Currently Editing : Transmille PC-DMM Process Meter (Procedure : 217)

Test Title	Test Value	Accuracy	Uncertainties
-----BLANK LINE-----			
DC Voltage Measure			
30mV D.C. Range	29.00mV	1.2mV	
300mV D.C. Range	290.0mV	11.8mV	
3V D.C. Range	2.900V	118mV	

Test Prompts Instruments Advanced Print

Test Type: EA022 Process Control Test Function: Voltage Measurement

Test Title: Continuity / Insulation Tester
PAT
RCD Tester
Loop Tester
Pressure
EA001 Thermocouple
EA001A Thermocouple
EA022 Process Control

Test Value: 2
D.P.:
Reading D.P. [Optional]:
RESULT INPUT:
 Keyboard (manual)

Accuracy (+): + 29.0 = 1.2mV

Uncertainties:

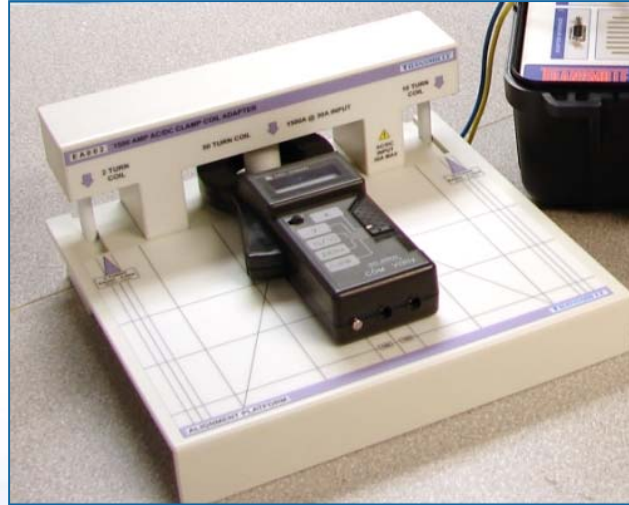
Auto Units

List Undo Delete Insert Paste Copy Prev Next Done

number 73 Enter a test title/description (maximum 20 characters)



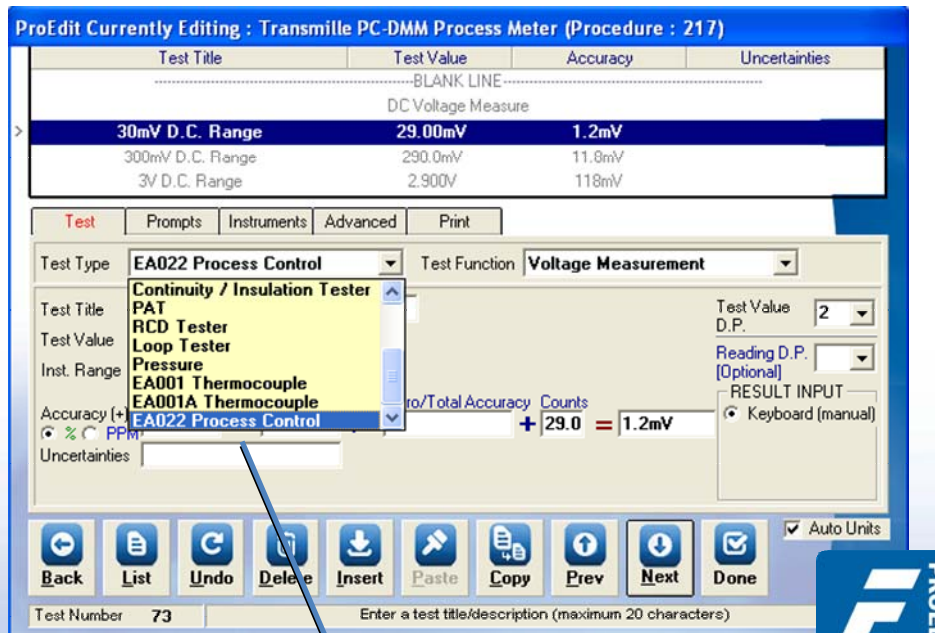
DIRECT ADAPTER CONTROL



PROCAL NOW PROVIDES NEW TEST TYPES TO SUPPORT TRANSMILLE ADAPTERS.

THE CONTROL OF ADAPTERS IS AS EASY AS SELECTING THE ADPTER MODEL AND AVAILABLE TEST TYPE, FURTHER DEMONSTRATING THE 'NO PROGRAMMING REQUIRED' APPROACH TO INSTRUMENT CONTROL

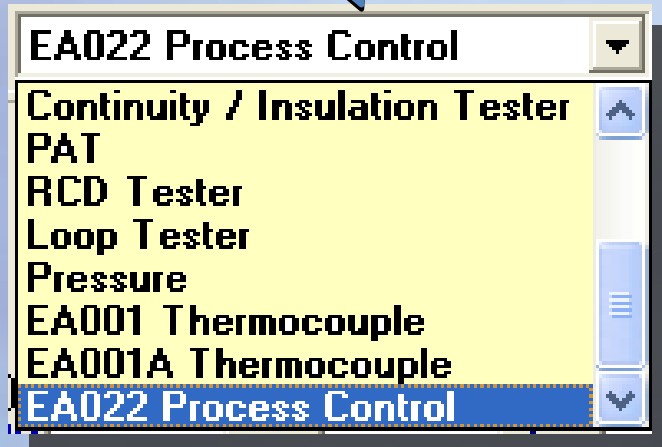
DIRECT ADAPTER CONTROL



- DEDICATED TEST TYPES FOR EACH AVAILABLE ADAPTER

- EACH FUNCTION LISTED FOR EASY SELECTION

- PROCAL TRANSLATES ADAPTER+FUNCTION SELECTIONS AND AUTOMATICALLY CONTROLS CALIBRATOR AND ADAPTER



DIRECT ADAPTER CONTROL

E Procedure Builder Wizard : Process Control Calibrator

Manufacturer Model Number Version Number

1 Meter Display 2 Actual Test Value

Function	Range Information		Instrument Specifications			Frequency (Hz)
	Lowest Range	Highest Range	% Of Reading	% Of Range	± Digits	
MEASURE						
DCV	<input checked="" type="radio"/> 30mV	<input type="text" value="1000V"/>	<input type="text" value="0.5"/>	<input type="text" value="1"/>	<input type="text" value="1"/>	—DC—
ACV	<input type="radio"/> 30mV	<input type="text" value="1000V"/>	<input type="text" value="0.5"/>	<input type="text" value="1"/>	<input type="text" value="2"/>	1000
DCI	<input type="radio"/> 300uA	<input type="text" value="10A"/>	<input type="text" value="1"/>	<input type="text" value="2"/>	<input type="text" value="5"/>	—DC—
ACI	<input type="radio"/> 300uA	<input type="text" value="10A"/>	<input type="text" value="1"/>	<input type="text" value="2"/>	<input type="text" value="10"/>	60
OHMS	<input type="radio"/> 10R	<input type="text" value="1GR"/>	<input type="text" value="2"/>	<input type="text" value="5"/>	<input type="text" value="15"/>	—DC—
FREQ	<input type="radio"/> 1Hz	<input type="text" value="10000Hz"/>	<input type="text" value="5"/>			
CAPS	<input type="radio"/> 1nF	<input type="text" value="100uF"/>	<input type="text" value="1"/>			—DC—
SOURCE						
DCV	<input type="radio"/> 30mV	<input type="text" value="20V"/>	<input type="text" value="2"/>	<input type="text" value="2"/>		—DC—
DCI	<input type="radio"/> 300uA	<input type="text" value="20mA"/>	<input type="text" value="2"/>	<input type="text" value="2"/>		—DC—

Linearity Function Linearity Range Linearity Step

4 Additional Checks Continuity Bleeper Diode Test Bar Display

Exit Settings Use Keyboard Entry Use Uncertainty Statements Instrument 2000/3000 Series EA015 Workstation EA002 Process Adapter Build Type New Append Build Procedure



PROEDIT
PROCEDURE
WIZARDS PROVIDE
DIRECT SUPPORT
FOR ADAPTER
CONTROL.

SIMPLY SELECT
THE TYPE OF
EQUIPMENT
AVAILABLE AND
PROCEDURE CAN
BE GENERATED IN
SECONDS USING
THE SELECTED
ADAPTER OR
CALIBRATOR

Instrument

2000/3000 Series

EA015 Workstation

EA002 Process Adapter

DIRECT ADAPTER CONTROL

Direct Adapter Control : List of Adapters



EA001 THERMOCOUPLE SIMULATION ADAPTER



EA001A THERMOCOUPLE SIMULATION / MEASUREMENT ADAPTER



EA002 CLAMP COIL ADAPTER



EA003 OPTICAL TACHOMETER ADAPTER



EA008 HIGH RESISTANCE / PICOAMP MEASUREMENT ADAPTER



EA013 PICOAMP SOURCE ADAPTER



EA014 TORQUE MEASUREMENT ADAPTER



EA015 MULTI FUNCTION WORKSTATION



EA016 ENVIROMENTAL MEASUREMENT ADAPTER



EA3023 3A / 63V POWER SUPPLY CALIBRATION ADAPTER



EA3012 TRANSCONDUCTANCE / HIGH CURRENT AMPLIFIER



EA3025 60A / 100V POWER SUPPLY CALIBRATION ADAPTER



www.youtube.com/Transmille



@Transmille

Transmille : Solutions In Calibration

**Providing Innovative
Solutions For The
Metrology Industry**

