

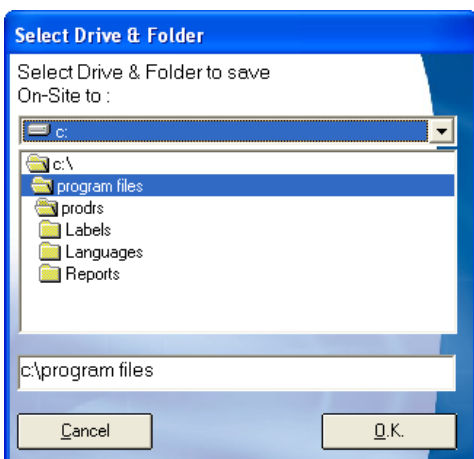
PRODRS V7.00 brings the following new functions to the software :

Export Database

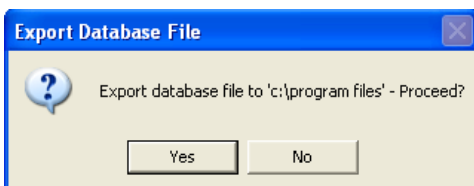
1. Select Setting -> Export Database



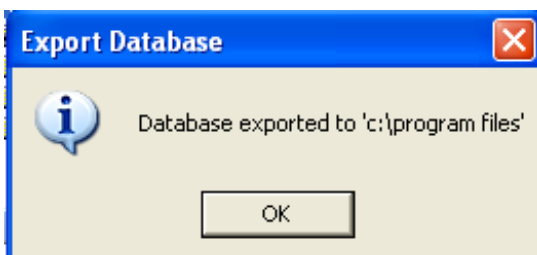
2. Select location to save database to (this can also be a USB drive or other removable storage device)



Click Yes to confirm export location

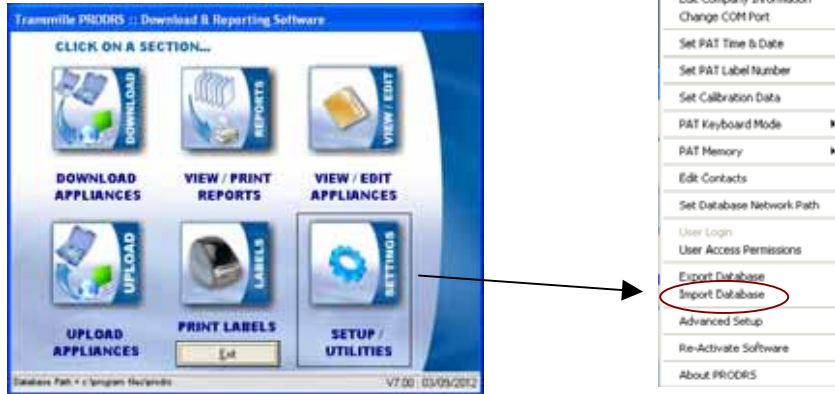


3. PRODRS will confirm file has been exported

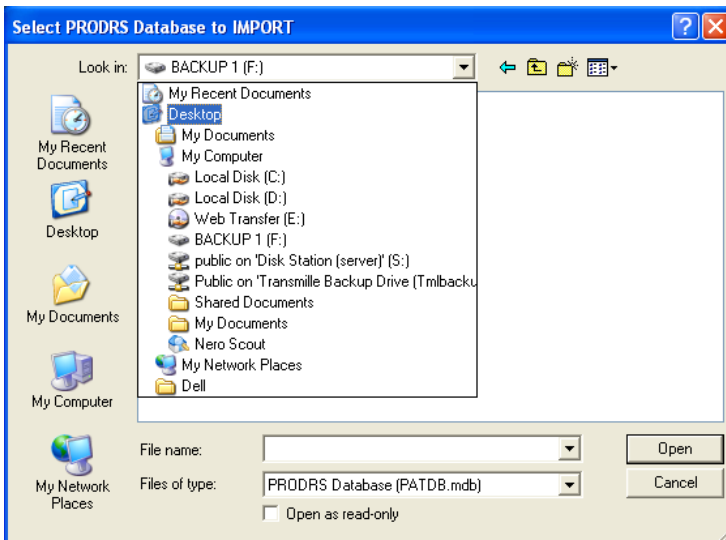


Export Database

1. Select Setting -> Import Database



2. Select file to import (this can be from USB drive or other removable storage device)



3. Database will be imported and become the 'active' database

