



DYMO LABEL PRINTER INSTALLATION

USING THE TRANSMILLE SOFTWARE CD

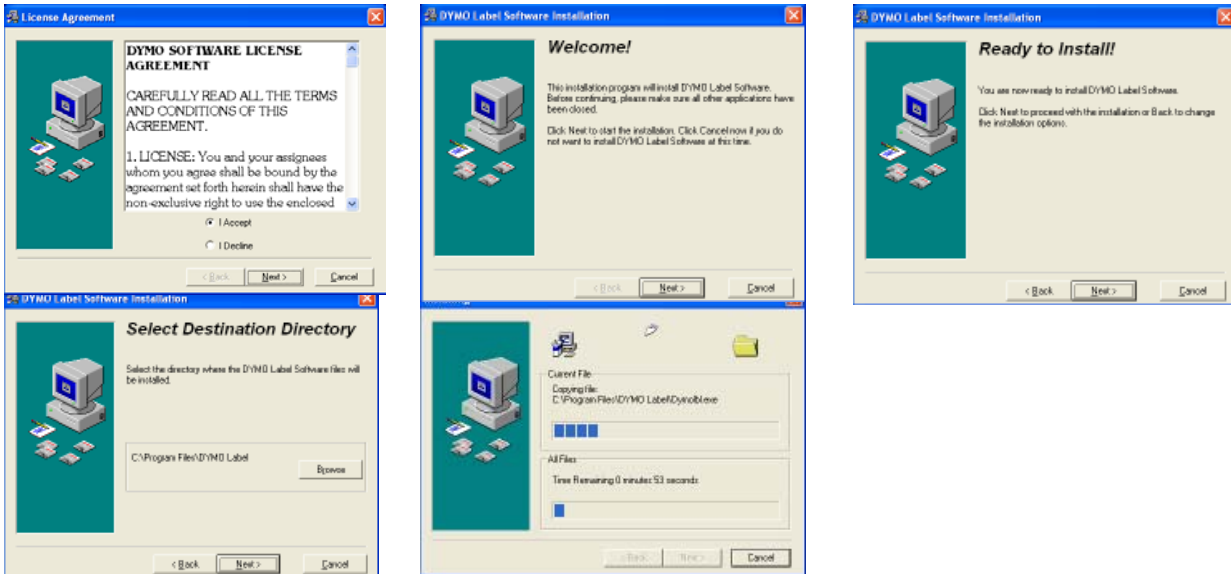
In order to use the **DYMO LabelWriter** range of printers with Transmille software please use **version 7.8 of the DYMO DLS software (WIN_DLS78.EXE)**.



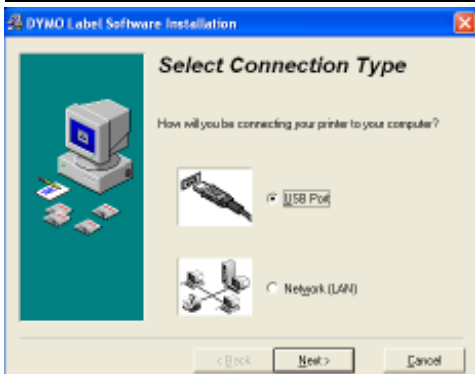
Please **do not** use the DYMO CD supplied with the model 450 printer – Use version 7.8 of the DYMO DLS software (WIN_DLS78.EXE) and the update for V7.8 software to support the 450 printer (DLS7Update.exe).

Installing the printer software (WIN_DLS78.EXE)

The printer software installation will begin – follow each step by clicking the **Next >** buttons :

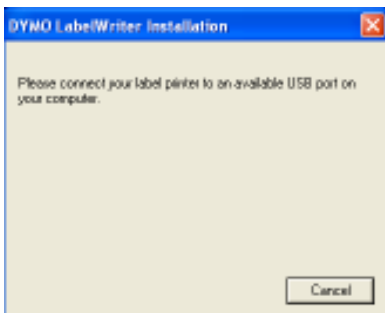


Final Steps

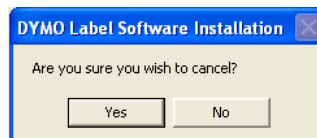


Select USB port

Connect printer to USB port on computer then click **CANCEL**



A WARNING WILL BE SHOWN AS BELOW - CLICK **YES** TO PROCEED

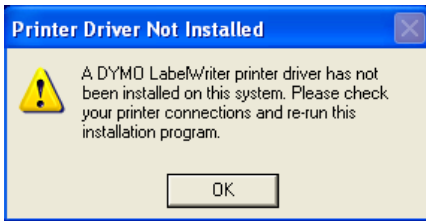




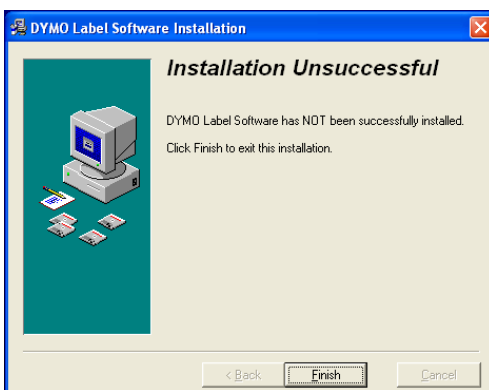
DYMO LABEL PRINTER INSTALLATION

USING THE TRANSMILLE SOFTWARE CD

After confirming the cancel operation, the following message will be shown – this is OK as the printer driver will be installed in a later step.



Finally an 'unsuccessful installation' message will be displayed – this is OK as the printer driver will be installed in the next step.



Proceed to driver update on next page...

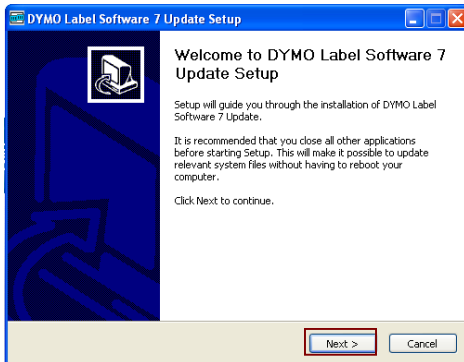


DYMO LABEL PRINTER INSTALLATION

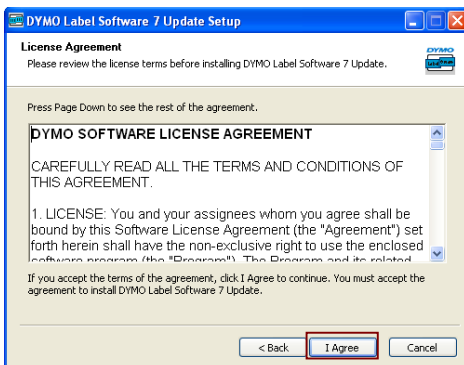
USING THE TRANSMILLE SOFTWARE CD

Installing the printer drivers (DLS7Update.exe)

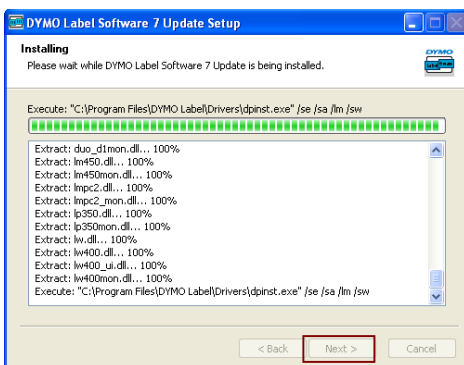
Click 'Next >'



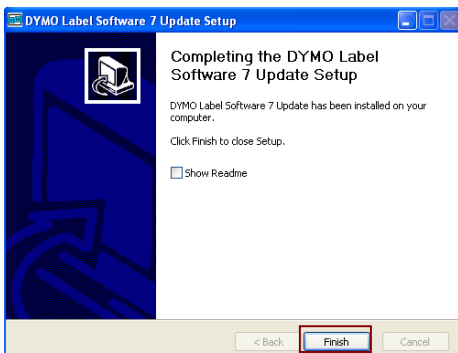
Click 'I Agree'



Click 'Next >'



Click 'Finish'



Once the update is installed your software is ready for use with Transmille software.

